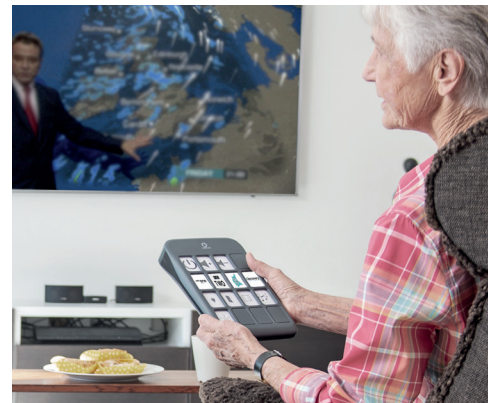


Steeper Group Assistive Technology Flexible Packages



Steeper Group Assistive Technology Flexible Packages

Everyone has the right to reach their full potential – and Steeper Assistive Technology is here to help empower individuals to take control of their environment and reduce their reliance on care.

Included in this brochure are examples of our flexible product packages that cover the many complex and varying needs of our users.

Each package can be individually tailored to meet specific communication and/or access requirements by pairing devices with an extensive range of switch options, bespoke mounting systems and additional components.

If you have any questions regarding bespoke packages, please contact our customer services team who will be happy to discuss your needs or arrange an assessment.

Tel: +44 (0) 113 207 0449 | Email: assist@steepergroup.com

* Please note that all prices and parts are subject to change, images shown are for illustrative purposes only.



Communication Packages

Grid Pad 12 & Eye Gaze Access

Features & Benefits

- Augmentative & Alternative Communication options
- Built-in environmental control features
- Easy access to social media apps
- Accessible via touch screen, switch, joystick, alternative mice and eye gaze technology
- Adaptable to accommodate users changing needs
- Multilingual options
- Connects to smart home hubs (eg. smart speakers)



This package Includes:

A Grid Pad 12
An AAC device with built-in environmental control features for adults and children that uses word or picture boards to assist users with complex communication needs. The Grid Pad is supplied with Grid 3 software pre-loaded, however more advanced packages are available. Accessible via touch screen or alternative access devices.

B Access Option

Alea Intelligaze Camera
An intuitive, portable eye gaze camera that tracks eye movement to accurately select items on the Grid Pad screen.

Camera Mount
Allows the Alea camera to attach onto the Grid Pad.

C Mounting Option

Floor Stand
Easy to position with adjustable height and lockable casters. Ideal when using eye gaze technology from a bed or reclining chair.

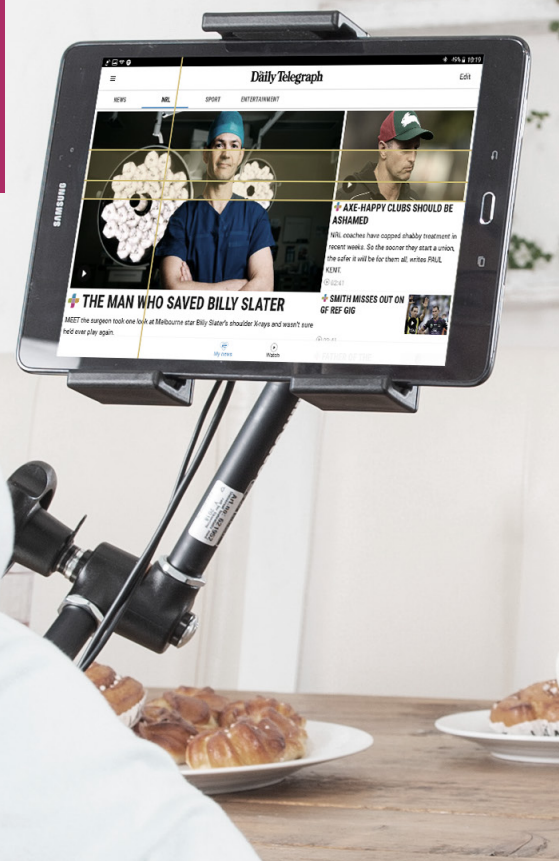
From £8100

Environmental Control Packages

Gewa Connect

Features & Benefits

- Controls home appliances and entertainment systems
- Works with Android devices
- Phone call and text features
- Access to apps including social media
- Point scanning / row-column scanning options
- Accessible via touch screen or various input switches



This package includes:

A Gewa Connect App
An intuitive program that provides the user with the ability to use built-in apps such as social media and video streaming sites, and can be controlled via touch screen or various input switches.

Android Tablet
Comes with Gewa Connect preloaded.

Gewa Multibox Hub
Connects to the tablet using Bluetooth allowing the user to send commands to their appliances via infrared or radio signals.

Andromeda Socket
This package comes with two Andromeda sockets to control appliances; with the option to add more if required.

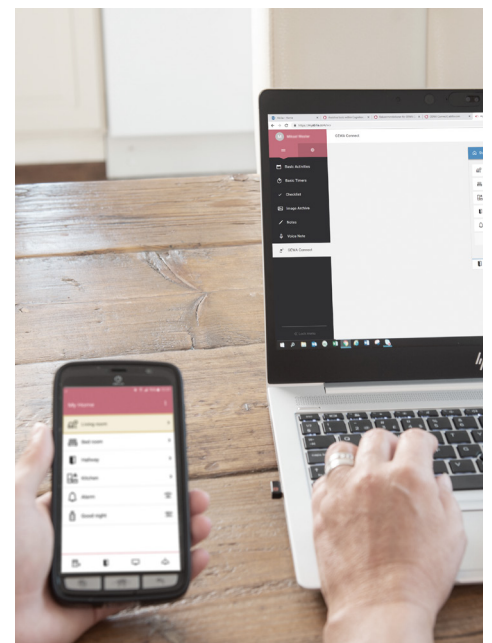
B Access Option

Buddy Button
A large, durable and colourful external push switch that can be plugged directly into the device.

C Mounting Option

Table Mount
Supplied with a tablet holder that holds the tablet as well as the Multibox Hub, and fixes onto a flexible mounting arm.

From £2600



Environmental Control Packages

evo+

Features & Benefits

- Works with iOS devices
- Makes phone calls via a landline
- Accessible via touch screen or various input switches
- Controls home appliances and entertainment systems
- Icons can be customised according to user preferences



This package includes:

A evo+ App
The evo+ app can be used in multiple rooms to seamlessly integrate with home control appliances and includes automatic update reminders. Users can personalise their home screen to access their most used icons and adjust image sizes for hassle-free use.

iPad
Comes with 128GB of storage, and the evo+ app preloaded and ready to use.

Minibirt
An infrared transmitter used in conjunction with the app to send signals to EC appliances.

Router
WiFi router allowing the device and Minibirt to connect wirelessly.

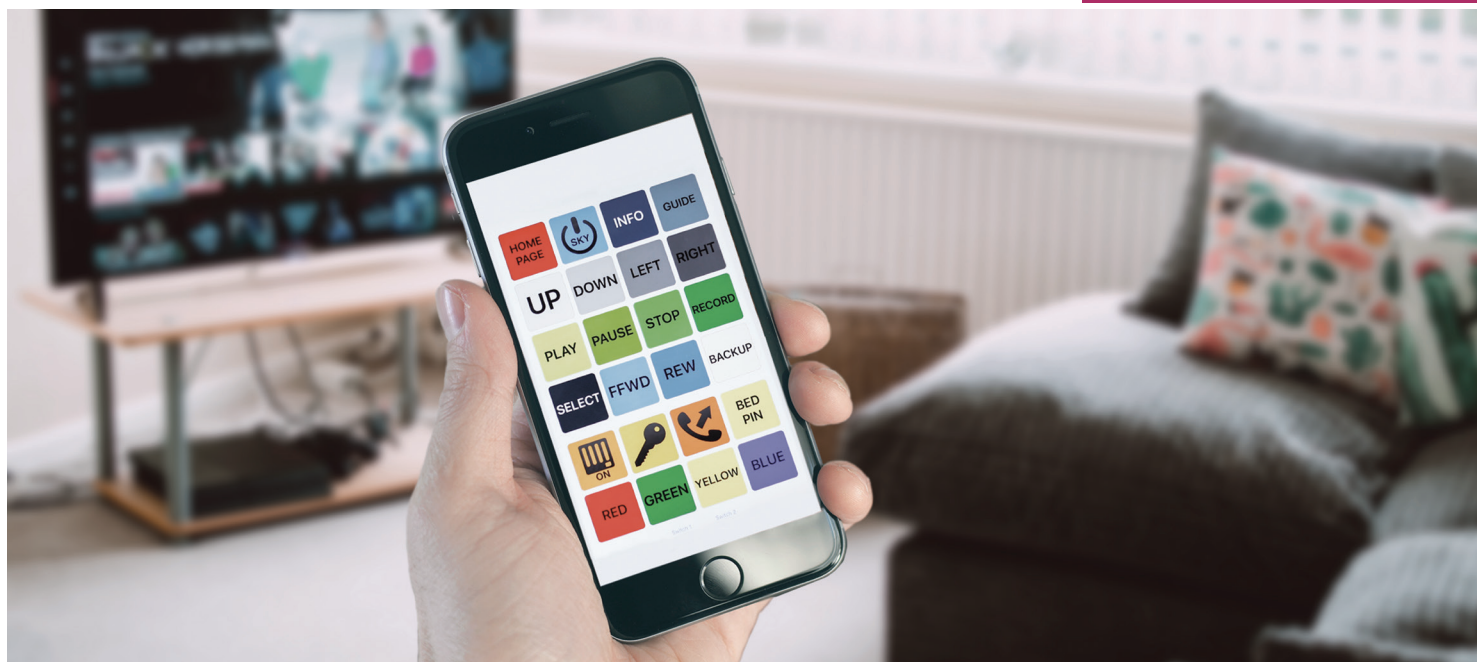
B Access Option

AMAneo BTi
A revolutionary assistive mouse adapter with anti-tremor features for iOS devices, allowing the user to control their device using a standard computer mouse or other input switches such as buttons or the Quha Zono.

C Mounting Option

Desk Mount
A free-standing desk mount for hands-free operation.

From £2100



Environmental Control Packages

Control Omni & Omni Lite

Features & Benefits

- Standalone remote control
- Controls home appliances in multiple rooms
- System uses infrared or radio signals to send commands to the devices
- 100+ programmable functions
- Phone call and text features with Control Omni version
- Accessible via touch screen or various input switches



This package includes:

- A Control Omni & Omni Lite**
The Control Omni and Omni Lite have simple item-by-item or page scanning options depending on the user's cognitive and visual capabilities. They have spoken auditory scanning and confirmation feedback of selected functions, to easily control home appliances like TV's, intercoms, doors and radios.

Andromeda Socket

This package comes with two Andromeda sockets to control appliances with the option to add more if required.

B Switch Option

Buddy Button

A large, durable and colourful external push switch that can be plugged directly into the device.

C Mounting Option

Docking Station and Mounting Arm
Supplied to ensure ease and comfort when using the device. Set up according to the user's preferences.

From £2400



Environmental Control Packages

Gewa Maxi

Features & Benefits

- Can be programmed with 16 functions
- Large, easy to press buttons
- Includes anti-tremor filter and keyguard
- Audible bleep or vibration confirmation alerts
- Standalone device
- Easily control home appliances via single button selection
- System uses infrared signals to send commands to appliances



This package includes:

A Gewa Maxi
Comes with an integrated keyguard to assist with locating keys. Suitable for people with symptoms of ataxia and loss of hand coordination, or for those who need a large simple remote.

Batteries
Supplied with four non-rechargeable AA alkaline batteries.

Andromeda Socket
This package comes with two Andromeda sockets to control appliances with the option to add more if required.

B Accessories

Blanking Caps
This package comes with blanking caps to cover unused buttons.

Hook and Loop Fixing Strips
To secure the device to a hard surface if required.

From £900

Accessories

To meet the varying preferences and capabilities of our users, Steeper Group has an extensive range of switch input options and bespoke mounting systems.

The following list provides examples of our most popular accessories, however there are many more options available that suit moderate to complex accessibility requirements.

Upon assessment, our experienced engineers will be able to recommend devices that will be most effective for the needs of the user.

Access Options

Quaha Zono



Accurate and intuitive access to a device using small head movements.

Can be paired with:
Grid Pad, Windows computers and Android tablets

Quaha Sento



Suitable for users that require accurate instant puff response to activate devices.

Can be paired with:
Grid Pad, Windows computers and Android tablets

Alea Intelligaze Camera



Suitable for users with limited mobility that require access via eye gaze technology.

Can be paired with:
Grid Pad and Windows computers

Pillow Switch



A large, soft switch suitable for head or cheek activation. Requires low-pressure selection.

Can be paired with:
Grid Pad, Gewa Connect, evo+ and Omni

Buddy Button

A large, durable and colourful external push switch that is easy to press to activate commands.

Can be paired with:
Grid Pad, Gewa Connect, evo+ and Control Omni



AMAneo BTi

Allows the user to control their device using a standard computer mouse or switch.

Can be paired with:
iOS devices and Apple computers



Supplementary Devices

Andromeda Socket



To turn a plugged in mains appliance on or off remotely or via an external switch.

Can be paired with:
All packages

Pager System



With up to 80 days of battery life, this robust pager provides a communication alert for packages that do not have this feature built-in.

Can be paired with:
All packages

Video Intercom



Provides live viewing and communication with visitors via the iOS device and evo+ app.

Can be paired with:
evo+

Door Opener Packages

Residential Doors

Features & Benefits

- Suitable for internal and external doors
- Can be paired with an environmental control device
- Discreet appearance
- Includes safety sensors, finger guards and signage



This package includes:

- A Residential Door Opener**
This door can be paired with any environmental control device or alternative activation methods such as key fobs or push pads and includes finger guards and safety sensors. A fire-rated option is also available.
- B Activation**
Key Fob
A keyless option to activate the door opener. This key fob has an easy to press and durable button.
- C Lock**
Winkhaus Lock
A remote control multi point lock for security and ease of access.
- D Accessories**
Video Intercom
A wireless video display handset that allows the user to communicate with visitors at their door. This is a waterproof, battery powered intercom, with six LED lights for night vision, a wide-angle lens camera and hands-free access.

From £2600



Door Opener Packages

Commercial Doors

Features & Benefits

- Suitable for heavy duty, high traffic exterior doors
- Operates heavy doors up to 250kg
- Can be paired with an environmental control device
- Adjustable hold times and opening/closing speeds



This package includes:

- A Commercial Door Opener**
This door opener can be mounted to control both inward and outward opening doors. Works with multiple access methods. A fire-rated option is also available.
- Package includes appropriate safety sensors, finger guards and signage
- B Activation**
- Key Fob**
A keyless option to activate the door opener. This key fob has an easy to press and durable button.
- Push Pad**
Hard-wearing activation point, ideal for internal and external use.
- C Lock**
- Electronic Lock Release**
A mechanism that controls the lock wirelessly.

From £2800



Purchase and funding options

The Process

Steeper communication and environmental control packages are suitable for individuals living with long term disabilities, who have the ability to operate equipment independently.

Our door opener packages can be used in home, care and commercial environments.

To arrange an assessment, please contact the Steeper Assistive Technology Team via +44 (0) 113 207 0449 or email assist@steepergroup.com, to discuss client requirements and arrange an appointment.

The Appointment

An experienced Steeper engineer will visit the client's residence, and working collaboratively with healthcare professionals will recommend the equipment required. A quotation is provided.

Assessing Funding Streams

Steeper work in collaboration with all parties to enable the best possible outcome for the client. Quotations can be sent to the relevant Environmental Control Hub, or local authority to apply for a grant.

NHS Funding

Available for environmental control and/or communication devices only.

Disabled Facilities Grant

Accessed via local authorities and can be used for door openers and peripheral environmental control appliances.

Other Private Funding

Including settlement funds, social services contracts, local authority (via OT) or funded by the client themselves.

Purchase of Equipment

The funding body send the purchase order to Steeper and our Customer Services Team contact the client and OT/HCP to arrange the installation of equipment.

Installation, Training and Maintenance

An experienced Steeper engineer installs equipment in the client's home and carries out instructional training to ensure the user is comfortable and confident to operate their new equipment. Our Customer Services Team will also arrange maintenance visits where appropriate.



Steeper

Assistive Technology

Our philosophy is to return independence through technology; delivering the tools that create the positive turning points that empower people to take control of their environment and reduce their reliance on care.

For more information on our assistive technology products, packages and services, please visit www.steepergroup.com

Alternatively please contact one of our friendly team who will be happy to discuss your requirements:

Tel: +44 (0) 113 207 0449

Email: assist@steepergroup.com

Steeper Group
Unit 3 Stourton Link
Intermezzo Drive
Leeds
LS10 1DF

STPAT027 Issue 1 © Steeper Group 2019

